

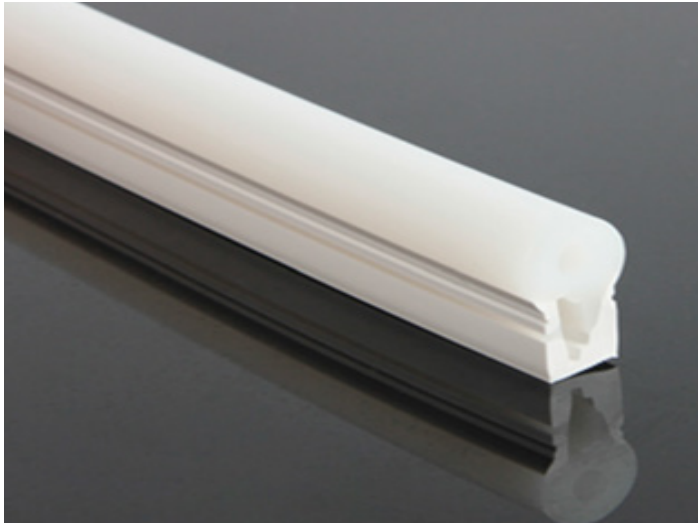
Light**FEEL**

# LED NEON LIGHT SILICONE TUBE

10 YEARS EXPERIENCE IN LED LIGHTING  
FULL SUPPORT SOLUTIONS



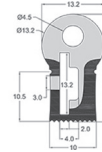
# Light FEEL LED NEON LIGHT SILICONE TUBE



## SL-N1023B

### Specification

Material	: Silicone resin.
PCB width	: 10-12mm.
Beam Angle	: 180°
Minimum bend diameter	: 100mm.
Available Lengths	: 50m(5m/10m/20m are available).
IP Rating	: IP67



### Accessories



Silicone end cap  
N1023B-EC (without hole)



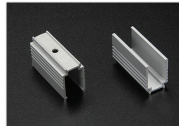
Silicone end cap  
N1023B-EC-B (Cable Output  
from Bottom)



Silicone end cap  
N1023B-EC-L (Cable Output  
from Left)



Silicone end cap  
N1023B-EC-R (Cable Output  
from Right)

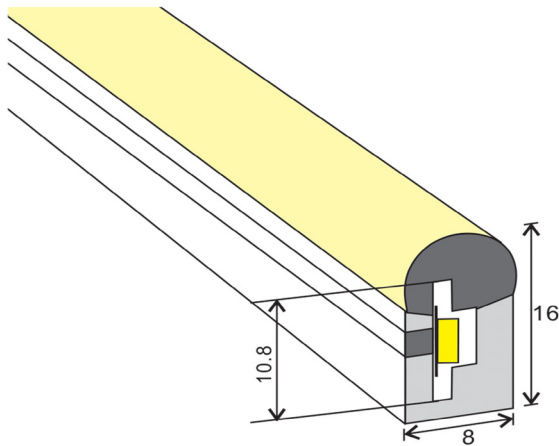


Metal mounting clip  
N1023B-AC

## SL-N0816B

### Specification

Material	: Silicone resin.
PCB width	: 8-10mm.
Beam Angle	: 150°
Minimum bend diameter	: 50mm.
Available Lengths	: 100m(5m/10m/20m/50m are available).
IP Rating	: IP67



### Accessories



Silicone end cap  
N1220B-EC (without hole)



Silicone end cap  
N1220B-EC-B (Cable Output  
from Bottom)



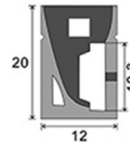
Silicone end cap  
N1220B-EC-L (Cable Output  
from Left)

## SL-N1220B



### Specification

Material	: Silicone resin.
PCB width	: 8-10mm.
Beam Angle	: 120°
Minimum bend diameter	: 100mm.
Available Lengths	: 50m(5m/10m/20m are available).
IP Rating	: IP67



### Accessories



Silicone end cap  
N1220B-EC(without hole)

Silicone end cap  
N1220B-EC-B(Cable Output  
from Bottom)

Silicone end cap  
N1220B-EC-L(Cable Output  
from Left)

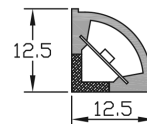
Silicone end cap  
N1220B-EC-R(Cable Output  
from Right)

Metal mounting clip  
N1220B-AC

## SL-NF1212 LED Neon Light (Silicone Resin)

### Specification

Material	: Silicone resin.
PCB width	: 8-10mm.
Beam Angle	: 110°
Minimum bend diameter	: 100mm.
Available Lengths	: 100m(5m/10m/20m/30m per reel are available).
IP Rating	: IP67
Operating temperature	: -2°~50°C



### Accessories



Silicone end cap  
N1212-EC(without hole)

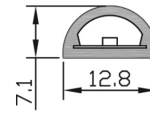
PC Cover x1  
Transparent  
Milky  
Frosted

## SL-N1207-2110 LED Neon Light (Silicone Resin)



### Specification

Material	: Silicone resin.
PCB width	: 8-10mm.
Beam Angle	: 160"
Minimum bend diameter	: 100mm.
Available Lengths	: 100m(5m/10m/20m/30m per reel are available).
IP Rating	: IP67
Operating temperature	: -20°~50°C



### Accessories



Silicone end cap  
N1212-EC(without hole)



PC Cover x1  
Transparent  
Milky  
Frosted